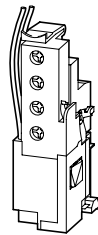
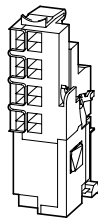
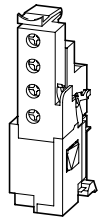


NZM2/3-XHIV(C)
NZM2/3-XU(V)(HIV)(C)...
NZM2/3-XU(V)HIV20...
NZM2/3-XA(HIV)(C)...
NZM3-XA(HIV)(C)-230AC-MNS

NZM2/3-XHIV
 NZM2/3-XU(V)(HIV)...
 NZM2/3-XA(HIV)...
 NZM3-XA(HIV)...

NZM2/3-XHIVC
 NZM2/3-XU(HIV)C...
 NZM2/3-XA(HIV)C...
 NZM3-XA(HIV)C...

NZM2/3-XUHIV20...
 NZM2/3-XUHIV20LK...



Lebensgefahr durch elektrischen Strom!
 Nur Elektrofachkräfte und elektrotechnisch unterwiesene Personen dürfen die im Folgenden beschriebenen Arbeiten ausführen.

Electric current! Danger to life!
 Only skilled or instructed persons may carry out the following operations.

Tension électrique dangereuse !
 Seules les personnes qualifiées et averties doivent exécuter les travaux ci-après.

Tensione elettrica! Pericolo di morte!
 Solo persone abilitate e qualificate possono eseguire le operazioni di seguito riportate.

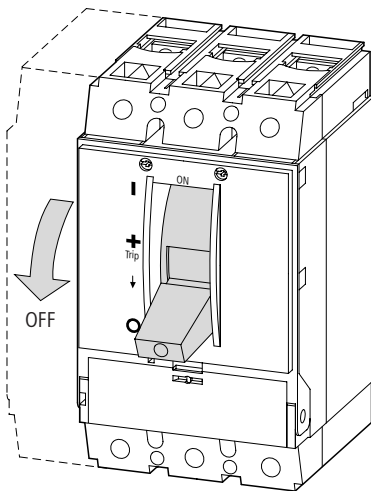
¡Corriente eléctrica! ¡Peligro de muerte!
 El trabajo a continuación descrito debe ser realizado por personas cualificadas y advertidas.

Электрический ток! Опасно для жизни!
 Только специалисты или проинструктированные лица могут выполнять следующие операции.

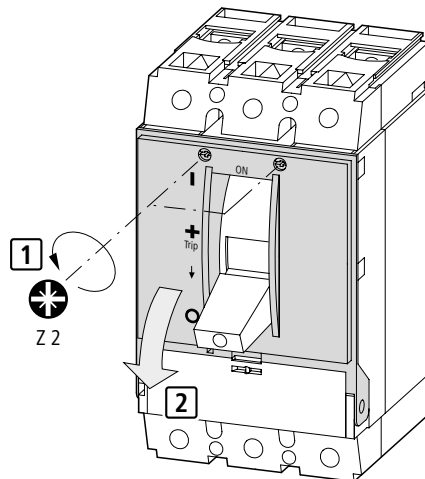
触电危险!
 只允许专业人员和受过专业训练的人员进行下列工作。

1

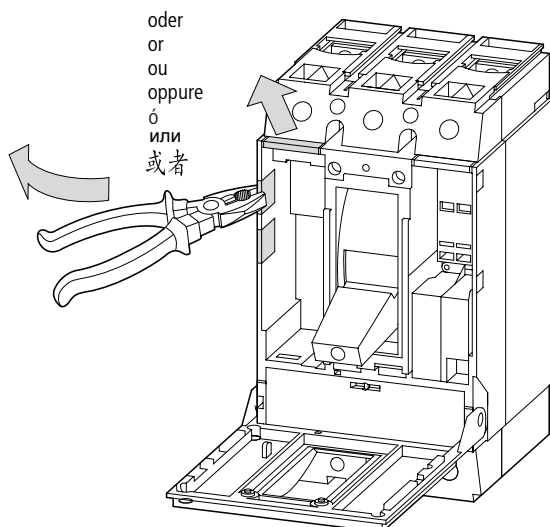
Montage
 Mounting
 Montaggio
 Montaje
 Монтаж
 安装



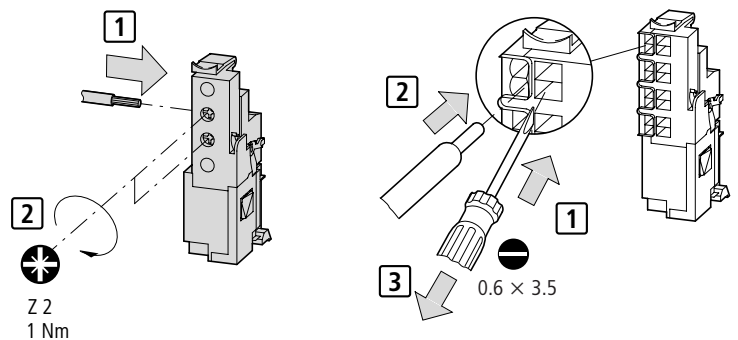
2



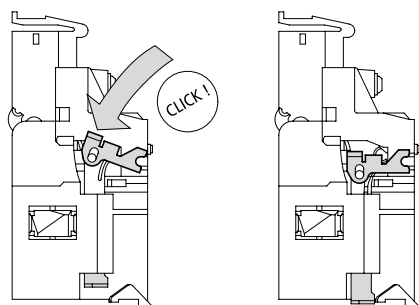
3



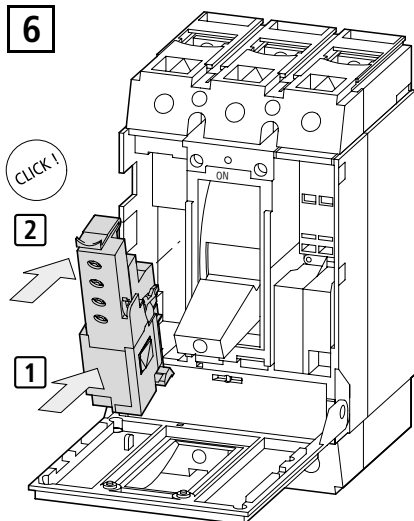
4



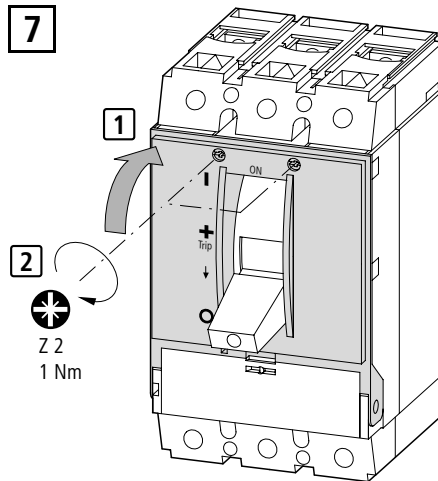
5



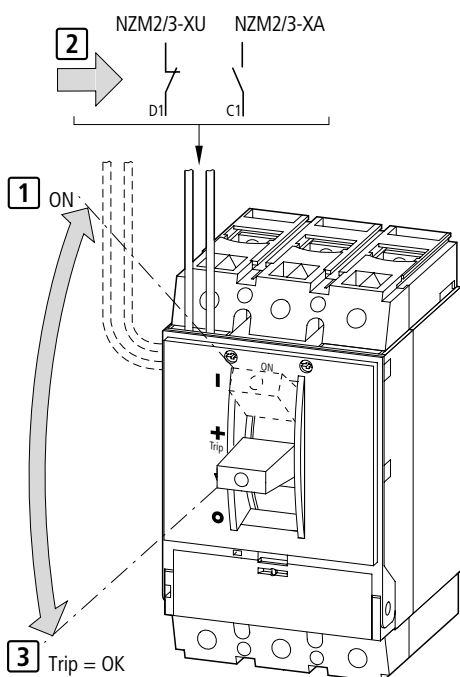
6



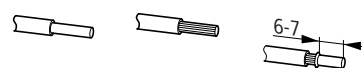
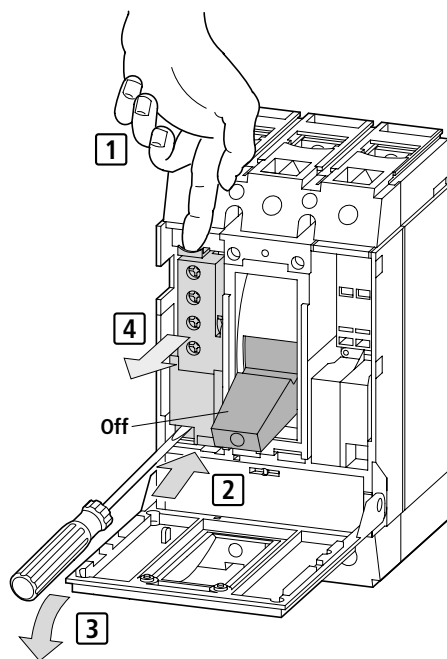
7



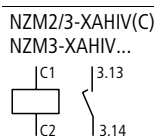
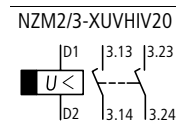
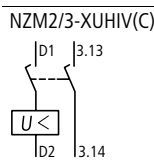
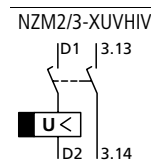
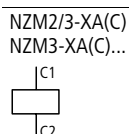
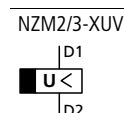
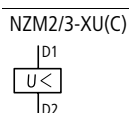
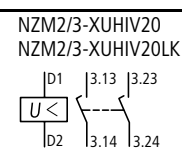
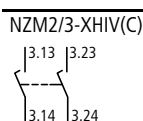
TEST



1 Demontage – Dismantling – Démontage – Smontaggio – Desmontaje – Разборка – 拆卸



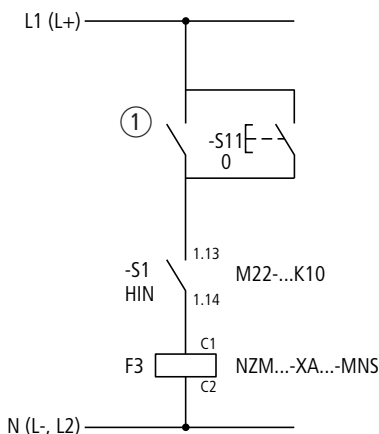
1(2) × 0.75 – 2.5 mm²
1(2) × AWG 18 – 14



02/04 AWA1230-1915

NZM3-XA(HIV)(C)-230AC-MNS

Kurzzeitbetrieb – Short-time operation – Service temporaire – Funzionamento per un breve periodo – Funcionamiento de corta duraciyn – ратковременный режим работы
短时间运行
≤ 1 s, 10 – 110 % U_s



① Rückleistungsrelaiskontakt
Reverse-power relay contact
Contact de relais de déclenchement au retour de puissance
Contatto relè di protezione contro l'inversione di corrente
Contacto de relé de retorno de potencia
Контакт реле обратной связи
回程功率继电器触点

-S1 Normalhilfsschalter
Standard auxiliary contact
Contacts auxiliaires normaux
Contatto ausiliare normale
Contacto auxiliar normal
Нормальный вспомогательный выключатель
标准辅助开关

-S11 Fern-Aus Remote Of
Déclenchement à distance
Comando a distanza spento
Off a distancia
Дистанционное отключение
遥控停止

F3 Arbeitsstromauslöser
Shunt trip
Déclencheur à émission de tension
Sganciatore a lancio di corrente
Disparador shunt
Расцепитель рабочего тока
工作电流切断器